

# Patonga

Caravan & Camping Area



# Welcome to

# PATONGA

Located south of Gosford in the tranquil bayside village of **Patonga**, the camping ground is the **perfect spot** for a relaxing family holiday

The Patonga Caravan and Camping Area is located at the mouth of the Hawkesbury River, between Patonga Creek and Patonga Beach, and surrounded by Brisbane Water National Park.

Visitors to Patonga come for the beautiful, natural surroundings, spectacular views and secluded atmosphere.

Just over an hour's drive north of Sydney, it's the perfect spot to relax and get away from the hustle and bustle of city life.

Patonga is perfect for boating, fishing, swimming, and many other water activities. The Patonga Beach Tavern & Bistro, a seafood takeaway and the Bakehouse Art Gallery are all within walking distance of the park.

There are several popular bush walking tracks offering spectacular views of the surrounding national park, which is brimming with native wildlife.

A ferry service also operates from Patonga public wharf, offering trips to nearby Palm Beach and Bobbin Head.

To make sure everyone has a safe and enjoyable stay, please be mindful that the following park rules apply to all guests.

### Accessibility



Accessible shower and toilet facilities for guests with disabilities are located in the amenities building. Keys are available from the office, and a security deposit is required.

### Amenities

All amenities are open 24 hours a day for your convenience, except when closed for cleaning - check the kiosk for times. Please ensure you leave the facilities in a neat and tidy condition. A baby bath is located in the family room at the amenities building, and a security deposit is required for use.



### Arrivals, Check In and Departures

Check in is from 1pm on the day of your scheduled arrival, and a coded entry number to the amenities building is available on check in. Sites are to be vacated by 10am on the day of departure. If you would like a late check out, please see staff at the office. Late check outs are subject to availability and will incur a late check out fee.

### Boating and Fishing

Please minimise noise when making early morning departures, and do not clean fish on your camp site. Instead, please use the fish cleaning table located to the boat ramp, and ensure all waste is wrapped and placed in the bins provided, and that the area is left clean after use.



### Barbecue Facilities

For your enjoyment, free barbecue facilities are provided throughout the park. Please ensure they are left clean after use.



### Children's Play Area

Parents are responsible for supervising their children for their own safety and the comfort of others. The children's play area is not to be used after dark.



### Bicycles, Scooters and Skates

Bicycles, scooters and skates are allowed during daylight hours.

Guests are required to observe road rules and requirements, including wearing a helmet and protective equipment or clothing.

Please consider that the roads in the park are also used by the general public.



### Evacuation Plan

In an emergency, remain calm and follow instruction from staff. For any after-hours, council-related emergencies, please call council on 4325 8222, or phone 000 if you require police, fire or ambulance.

### Fires (Permitted between 1 April and 31 August only)

Small camp or cooking fires are permitted, providing they adhere to the following NSW Rural Fire Service requirements:

*The fire is to be contained in a fire pit or drum, elevated at least 20cm off the ground, with a cleared two metre radius away from flammable objects and tents.*



**Fires are NOT to be placed on or near shade cloth pads or left unattended.**

Camp or cooking fires may only consist of natural material, such as untreated wood or heat beads.

Burning rubbish, plastics and treated or painted timber is strictly prohibited.

It is the responsibility of campers to stay aware of the current daily Fire Danger Rating and associated safety precautions. For information, please visit [www.rfs.nsw.gov.au](http://www.rfs.nsw.gov.au)

Ash must be wet down, cooled and disposed of in the red bins provided throughout the park. Please consider the impact of smoke from your fire on nearby guests.

Fires are to be extinguished if directed to do so by the camp ground staff or security.

Patonga Creek



Picnic Area

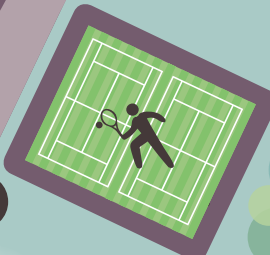
To Tavern, Takeaway & Public Wharf



PATONGA STREET

BAY STREET

Visitor Parking



OFFICE



Playground



Electric BBQ



Grey Water Disposal



Amenities

Evacuation Assembly Area



Patonga Beach

Brisk Bay

- Powered Site (1-36)



Fish Cleaning



Boat Ramp



Electric BBQ

Adjacent residents' parking

## Fireworks

Fireworks are prohibited in the park.

## Generators

Generators may only be used between 9am and 6pm.

## Grey Water

Grey water should not be allowed to flow directly on to grassed areas. Water should be collected and disposed of in the sullage dump point at the side of the amenities block.

## Laundry

The coin-operated laundry is open 24 hours a day, with washing machines and clothes dryers available for your use. Washing powder is available for purchase in the laundry area.

## Office Hours

Office hours vary according to season, but are typically 8am-4pm, seven days a week.

Guests arriving outside these hours must contact the park reception during office hours to make alternate arrangements. Snacks, fresh milk and bread, cold beverages, bait, ice, sunscreen, insect repellent, paracetamol, fishing licences and tackle are available from the office.



## Pets

Pets are not allowed in the park. Assistance animals are permitted.

## Quiet Time

For the comfort of all our guests, there is a noise curfew in place from 10.30pm to 8am. Please restrict noise from televisions, music and social gatherings during these hours. Please be mindful that voices carry in open spaces at night - undue noise and offensive behaviour or language will not be tolerated.

## Rubbish and Recycling

Please assist staff by depositing your securely bagged waste in the red bins, and recyclable materials in the yellow bins, located around the park.



## Security

Security guards are employed to patrol the park during peak times to ensure your stay is safe and enjoyable.

## Sites

Cars, boats and trailers must be contained within the site. Any additional cars must be parked in designated parking areas. Please set up your tent or annex onto the shade cloth pad. This will protect the grass and the base of your tent. Please do not pour hot water or oil out onto the grass.



## Smoking

Children's play areas, all buildings and covered areas are smoke-free zones, including all of the amenities and laundry facilities.

## Speed Limit

All roads in the park are shared pedestrian zones. Speed limits are walking pace only.

## Tableware

Sinks for washing tableware are provided adjacent to the amenities. Please do not wash dishes or food service items in the laundry tubs.

## Tennis Courts

Should you wish to hire out the tennis courts, please register your name at the office.

Court hire is \$12.50 per court, per hour. Tennis racquets and balls are available at no charge; however, a \$20 security deposit is required.



## Visitors

Guests are responsible for their visitors' behaviour. Any visitor who stays overnight must be registered prior to staying (fees apply).

The maximum number of people permitted to camp per site is six.

## Water Balloons

The use of water balloons is not permitted in the park.

## Strictly Prohibited in the Park

**Campers who do not respect the safe enjoyment of others will be asked to leave. Illegal drugs, excessive use of alcohol, undue noise or mess around site, unregistered overnight guests, use of offensive language, or acts of violence or abuse will result in guests being evicted from the park without a refund.**

# Booking Information

## Site Fees and Charges (as at 1 July 2016)

All site fees include two persons on a site - extra charges are indicated below.

Site Fees	Peak (per night)	Shoulder (per night)	Off-Peak (per night)
Powered Site	\$54	\$39	\$25.60
Unpowered Site	\$43	\$30.25	\$20.50
Adult (12 years +)	\$9.75	\$9.75	\$9.75
Child (2 years +)	\$7.20	\$7.20	\$7.15

### Peak Periods:

- > 1 December - 31 January inclusive;
- > Easter long weekend and April school holidays;
- > October long weekend and September/October school holidays;
- > Weekends (Friday and Saturday nights) during the period September - April inclusive.

### Shoulder Period:

- > 1 September to 30 November (inclusive), excluding weekends, the October long weekend and September / October school holidays;
- > 1 February to 30 April (inclusive), excluding weekends, the Easter long weekend and April school holidays;
- > June long weekend (Friday, Saturday and Sunday night).

**NB:** Friday and Saturday nights during the shoulder periods are charged at the peak rate. The June long weekend is charged at the shoulder rate.

### Off-Peak Period:

- > 1 May to 31 August.

### Minimum booking periods

- > Christmas holidays - minimum seven night stay (Saturday to Saturday);
- > April and October school holidays - minimum three night stay;
- > Easter long weekend - **minimum three night stay**;
- > All weekends - **minimum two night stay**; and
- > Weekends during shoulder period (excluding April and October school holidays, and the Easter long weekend) - **minimum two night stay**.

## Minimum Age

Bookings will not be taken from persons under the age of 18. Campers who are under 18 years of age are not permitted without the booking adult present per site booked.

## Discount Rates

There is a discount of 10 per cent for schools (applies to site fee only), to a maximum discount of \$30 per group booking. Seniors Card holders discount are available. Not available in conjunction with any other discount or offer. Not during any peak period.

## Refunds and Cancellations

A full refund is applicable where Gosford City Council has been notified at least 30 days prior to the proposed arrival date.

Refunds for cancellations after that period will incur an administration fee of \$26.65. No refund will be given for cancellations seven days prior to the booking.

Cancellations will be accepted by phone on 4379 1287, or by post to PO Box 21, Gosford NSW 2250.

For details of our policy, please visit council's website - [gosford.nsw.gov.au](http://gosford.nsw.gov.au) - and search 'Patonga Camping Area'.

Please be aware that we are unable to refund any monies for late arrivals, early departures, evictions or in the event of inclement weather. Council reserves the right to rebook any unoccupied sites.

## How to Make a Booking

To book your site, please phone the friendly staff at Patonga Camping Area on 4379 1287, seven days a week, or email [patongacampingarea@centralcoast.nsw.gov.au](mailto:patongacampingarea@centralcoast.nsw.gov.au)





## Patonga Caravan & Camping Area

 Bay Street, Patonga NSW 2256

 (02) 4379 1287

 [PatongaCampingArea@centralcoast.nsw.gov.au](mailto:PatongaCampingArea@centralcoast.nsw.gov.au)

 [gosford.nsw.gov.au](http://gosford.nsw.gov.au)

Central  
Coast  
Council